



INSTALLATION INSTRUCTIONS MODEL HX HOUSE EXTENSION FOR ACME KOOL-CEL® SYSTEMS

1. Locate and identify the parts as shown in Figure 1. These parts are set up to be adjustable for different wall heights and can be assembled in height increments of three inches as shown in Figures 1 and 2.
2. Prior to the start of assembly, measure the wall where the Kool-Cel® system is to be installed to establish the height requirement for the support. **CAUTION:** Be sure to allow for thickness of roofing material (supplied by others) and height of purlins as shown in Figure 2.

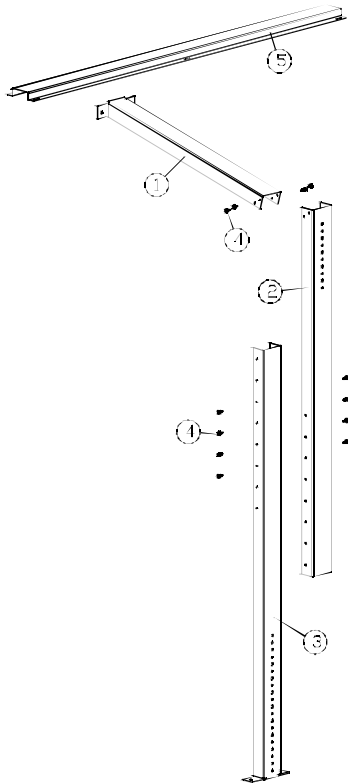


Figure 1

Parts Legend	
1	Support Top
2	Vertical Leg Top
3	Vertical Leg Bottom
4	Screw, 1/4 x 5/8 Hex Head
5	Purlin

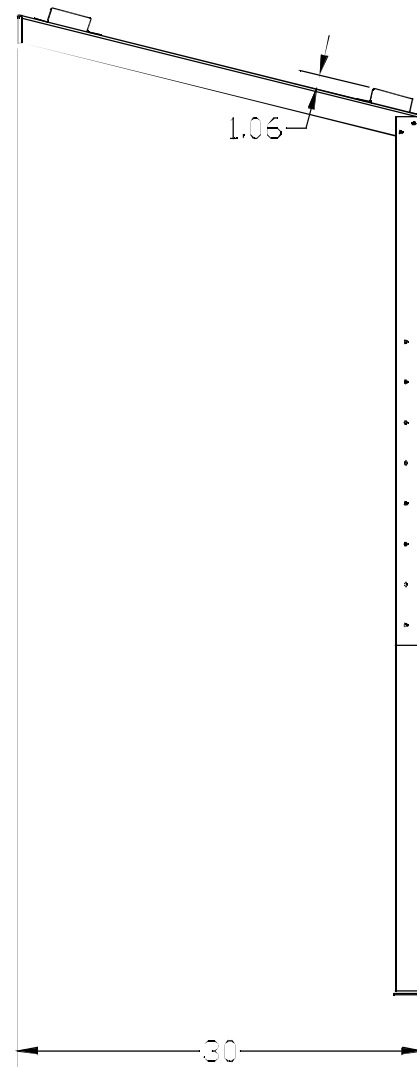


Figure 2

3. Pour a concrete footing to accommodate the base of the vertical legs. The footing should be capable of supporting 25 pounds per foot plus 4.11 pounds per square foot of pad. See Figures 3 and 4.

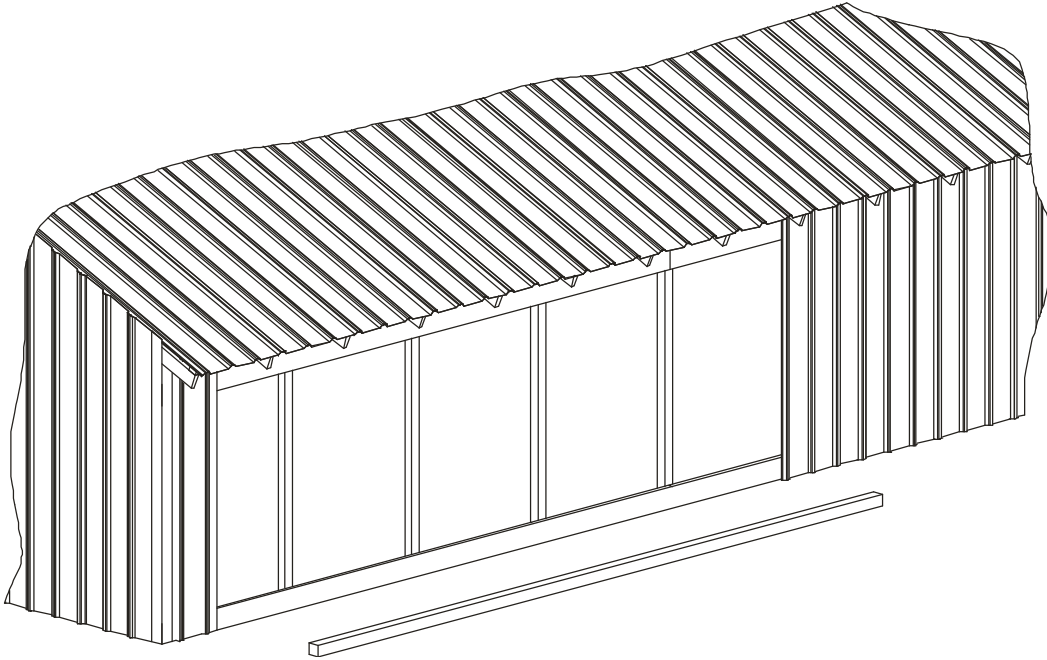


Figure 3

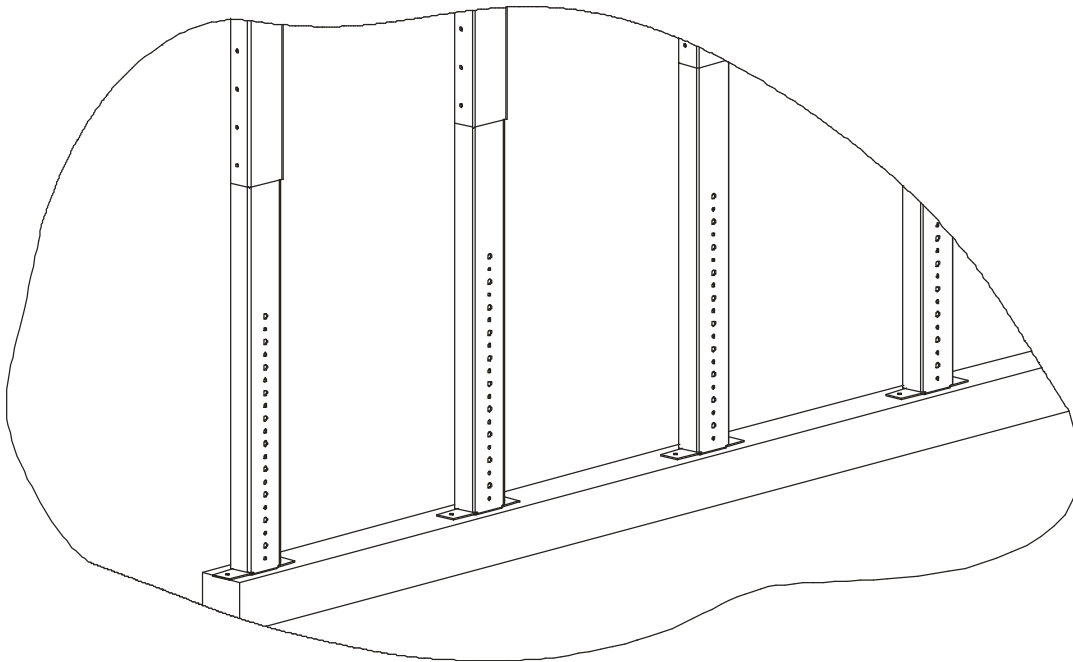


Figure 4

4. Assemble each support section as shown in Figure 1 using the 1/4 x 5/8 sheet metal screws provided.
5. Support spacing is to be 30 inches center to center except for the first and last pair. The spacing for the first and last pair is to be 28 inches center to center. This is to allow the purlins for the first and last pair to start on the outside edge of the support.

6. Install the support sections as shown in Figure 5. The vertical legs should be plumb before attaching the support top to the wall.

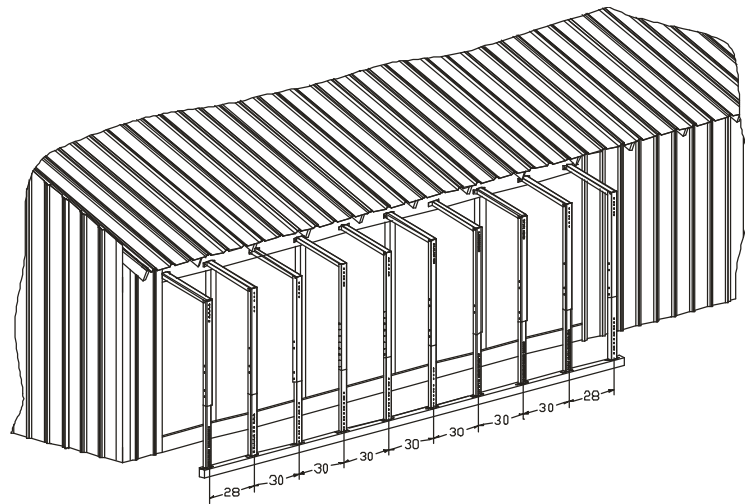


Figure 5

7. Install the purlins as shown in Figure 6 using the 1/4 x 5/8 screws provided.

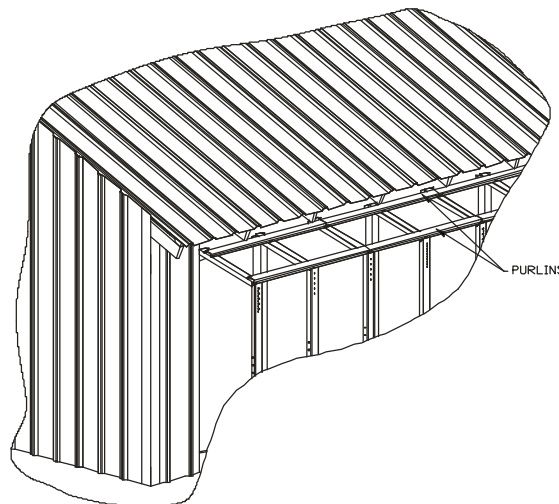


Figure 6

8. Install the stringers according to the installation instructions provided with your Kool-Cel® system. See Figure 7.

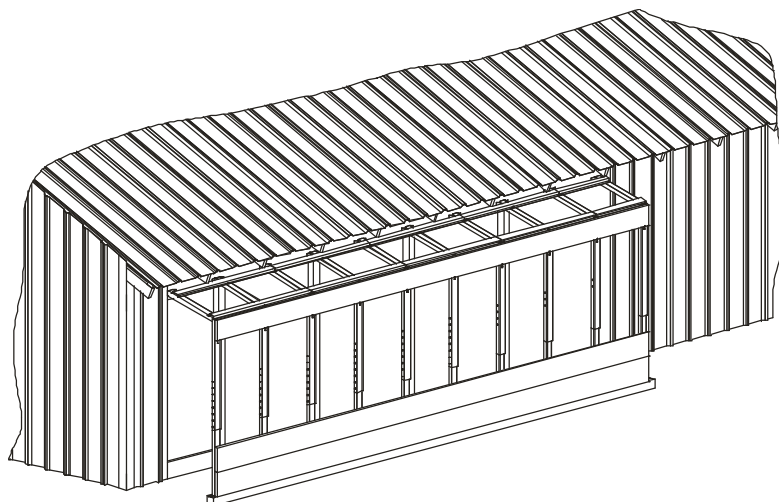


Figure 7

9. Install the roofing material and finish the ends as required (supplied by others).
10. Install the Kool-Cel® system and cover the portion of the wall that is not covered by the Kool-Cel® system. The completed system should look like Figure 8.

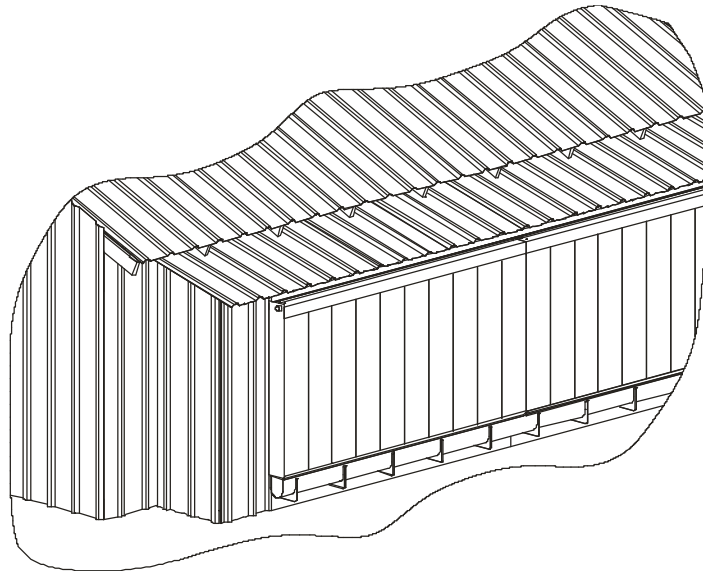


Figure 8

NOTICE

These instructions cover the usual installation, operation and maintenance methods for which the product(s) was designed. They do not purport to cover all details or variations in the product(s) nor to provide for every possible contingency that might be met in connection with the installation, operation and maintenance. For any departures from these instructions, or should particular problems arise which are not covered sufficiently for the purchaser's purpose, the matter should be referred to Acme Engineering and Manufacturing.

Acme Engineering and Manufacturing Corporation has made a diligent effort to illustrate and describe the products in this literature accurately; however such illustrations and descriptions are for the sole purpose of identification and do not express or imply a warranty that the products are merchantable or fit for a particular purpose, or that the products will necessarily conform to the illustrations or descriptions or dimensions.

WARNING

Acme products are designed and manufactured to provide reliable performance, but they are not guaranteed to be 100% free of defects. Even reliable products will experience occasional failures and this possibility should be recognized by the User. If these products are used in a life support ventilation support system where failure could result in loss or injury, the user should provide adequate back-up ventilation, supplementary natural ventilation or failure alarm system or acknowledge willingness to accept the risk of such loss or injury.

LIMITED WARRANTY

WARRANTY AND DISCLAIMER. Acme Engineering and Manufacturing Corporation extends this limited warranty to the original buyer and warrants that products manufactured by Acme shall be free from original defects in workmanship and materials for two years from date of shipment, provided same have been properly stored, installed, serviced, maintained and operated. This warranty shall not apply to products which have been altered or repaired without Acme's express authorization, or altered or repaired in any way so as in Acme's judgment to affect its performance or reliability, nor which have been improperly installed or subjected to misuse, negligence or accident, or incorrectly used in combination with other substances. The Buyer assumes all risks and liability for the results of use of the products. Warranties on purchased parts such as electric motors, pumps and controls are limited to the terms of warranty extended by our supplier.

LIMITATION OF REMEDY AND DAMAGES. All claims under this warranty must be made in writing and delivered to Acme Engineering and Manufacturing Corporation, Box 978, Muskogee, Oklahoma 74402 within 15 days after discovery of the defect and prior to the expiration of two years from the date of shipment by Acme of the product claimed defective, and Buyer shall be barred from any remedy if Buyer fails to make such claim within such period.

Within 30 days after receipt of a timely claim, Acme shall have the option either to inspect the product while in Buyer's possession or to request Buyer to return the product to Acme at Buyer's expense for inspection by Acme. Acme shall replace, or at its option repair, free of charge, any product it determines to be defective, and it shall ship the repaired or replacement product to Buyer F.O.B., point of shipment provided, however, if circumstances are such as in Acme's judgement to prohibit repair or replacement to remedy the warranted defects, the Buyer's sole and exclusive remedy shall be a refund to the Buyer of any part of the invoice price, paid to Acme for the defective product or part.

Acme is not responsible for the cost of removal of the defective product or part damages due to removal, or any expenses incurred in shipping the product or part to or from Acme's plant, or the installation of the repaired or replaced product or part.

Implied warranties, when applicable, shall commence upon the same date as the express warranty provided above, and shall except for warranties of title, extend only the duration of the express warranty. Some states do not allow limitations on how long an implied warranty lasts, so the above limitation may not apply to you. The only remedy provided to you under an applicable implied warranty and the express warranty shall be the remedy provided under the express warranty. Subject to the terms and conditions contained therein, Acme shall not be liable for incidental and consequential losses and damages under the express warranty, any applicable implied warranty, or claims for negligence, except to the extent that this limitation is found to be

unenforceable under applicable state law. Some states do not allow the exclusion or limitation of incidental or consequential damages, so the above limitation or exclusion may not apply to you. This warranty gives you specific legal rights, and you may also have other rights which vary from state to state.

No employee, agent, dealer, or other person is authorized to give any warranties on behalf of Acme or to assume for Acme any other liability in connection with any of its products except in writing and signed by an officer of Acme.

TECHNICAL ADVICE AND RECOMMENDATIONS, DISCLAIMER. Notwithstanding any past practice or dealings or any custom of the trade, sales shall not include the furnishing of technical advice or assistance or system design. Any such assistance shall be at Acme's sole option and may be subject to additional charge.

Acme assumes no obligation or liability on account of any recommendations, opinions or advice as to the choice, installation or use of products. Any such recommendations, opinions or advice are given and shall be accepted at your own risk and shall not constitute any warranty or guarantee of such products or their performance.

GENERAL. In no event shall any claim for consequential damages be made by either party. The Company will comply with all applicable Federal, State and local laws.

