



ACME ENGINEERING & MANUFACTURING CORP.
P.O. Box 978
Muskogee, OK 74402
Phone: 918/682-7791
Fax: 800/382-2263
acmeag@acmefan.com

CONTROLS

**KOOLMASTER®
Model LS**

**30, 40, or 56, 2 HP OUTPUTS
2 Variable Speed Outputs
16 Cooling Stages
12 Heat Zones**



ENVIRONMENTAL MANAGEMENT SYSTEM

Acme's LS system automatically provides control of temperature and circulation with state of the art technology.

FEATURES

- CONTINUOUS LIT READOUT
- EASY MAINTENANCE AND INSTALLATION
- LARGE SCREEN DISPLAY
- GASKET SEALED ENCLOSURE
- CONTROL WIRING FACTORY INSTALLED
- RAMPING CONTROL FOR
 - TEMPERATURE
 - MINIMUM VENTILATION
 - LIGHTING
 - 24 HR CLOCKS
- LIGHT CONTROL -TIME AND INTENSITY
- WATER LINE BREAK PROTECTION

CAPABILITIES

- EASY HOT KEY PROGRAMMING
- POWER UP SEQUENCING
- 16 COOLING STAGES
- PLUG IN POWER RELAYS
- 12 HEAT STAGES
- EASY PROGRAM SHARING
- 4 AUXILIARY STAGES
- PC COMPATIBLE
- KOOL-CEL CLOCK CONTROL
- TWO STAGE VARIABLE SPEED OPTION

DESCRIPTION

The **KOOLMASTER® LS** is an electronic device used for environmental control in livestock buildings allowing the user to maintain a specified target temperature by controlling the operation of ventilation and heating equipment. Up to 12 heater stages, 16 fan stages, tunnel curtain, and side vent inlets, 4 auxiliary outputs, and four clock outputs may be controlled. Static Pressure controls the inlet vents and if desired the tunnel inlets. Inlets may also be controlled by rheostat position feedback.

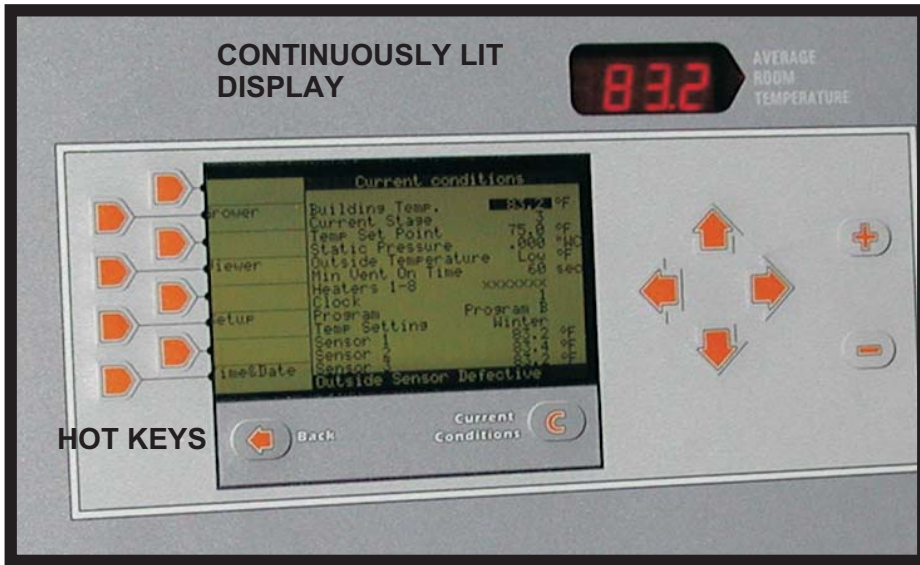
The LS provides up to 56, 2 HP power relays and up to 2 variable speed outputs. Inputs are available for, up to 8 inside temperature sensors, 1 outside temperature sensor, static pressure sensor, humidity sensor, and ammonia sensor. Once programmed the entire setup

may be easily transferred to other houses. All parameters are accessible by a PC located at the site or via a modem to any other location. Daily reports may be logged for review or e-mailed to any remote mailbox.

A backup system is available where the thermostat settings cannot interfere with the computer settings. If the computer power should fail, the backup system steps in and controls the house with up to six mechanical thermostat stages.

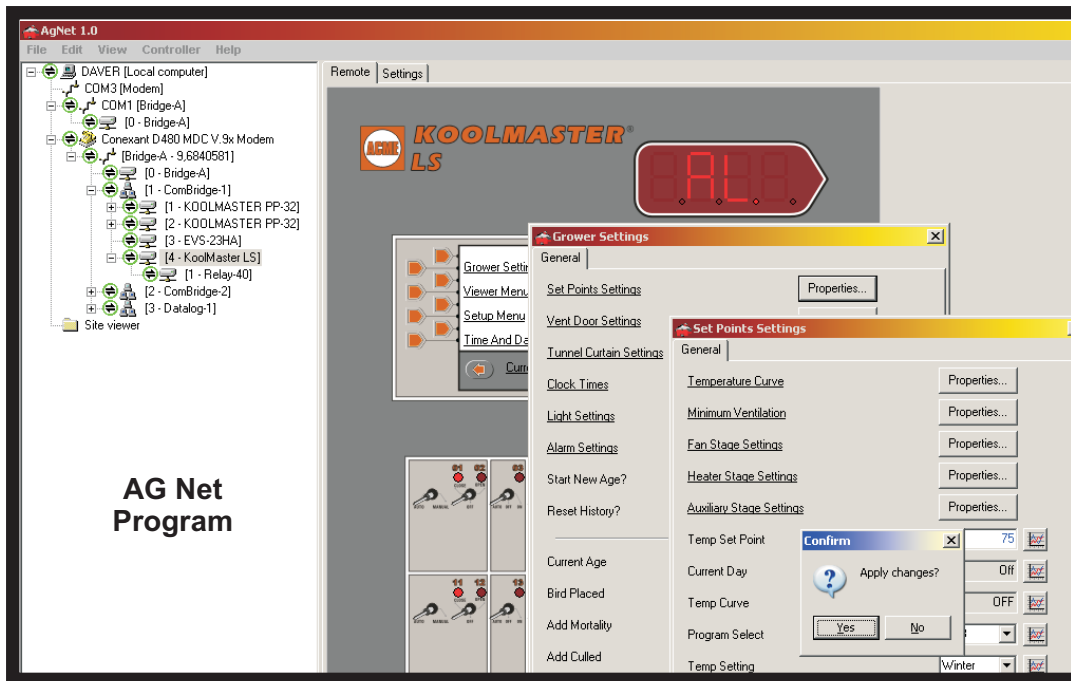
The **KOOLMASTER® LS** is a complete environmental control center.

The products shown on this brochure are covered by a limited warranty. For a complete copy of the warranty statement, see form MS149 or write to Acme Engineering & Manufacturing Corporation, P.O. Box 978, Muskogee, OK 74402.



Standard Temperature Sensor

A 16-line display with HOT KEYS leads you through the process of programming and maintenance. In addition, the continuously lit display shows the Temperature, Stage, and Static Pressure easily readable inside the building.



The KOOLMASTER® LS can also be programmed through an attached computer.

Printed and e-mail reports may be generated on a daily basis.

8/17/2004 - 10:00:01 AM
Daily Report
The Chicken Ranch

Period	Date	Time	Day	Bird Count Building	Min Ventilation - On Time Building	Current Conditions - Building Temp	Temperature - Average - Yesterday - Min	Temperature - Average - Yesterday - Max
0	8/27/2004	10:00:00 AM	Tuesday	30000	60	79.7	74.2	83.6



ACME ENGINEERING & MANUFACTURING CORP.
P.O. Box 978, Muskogee, Oklahoma 74402
Telephone: 918-682-7791 Fax: 918-682-0134
www.acmeag.com e-mail: acmeag@acmefan.com